

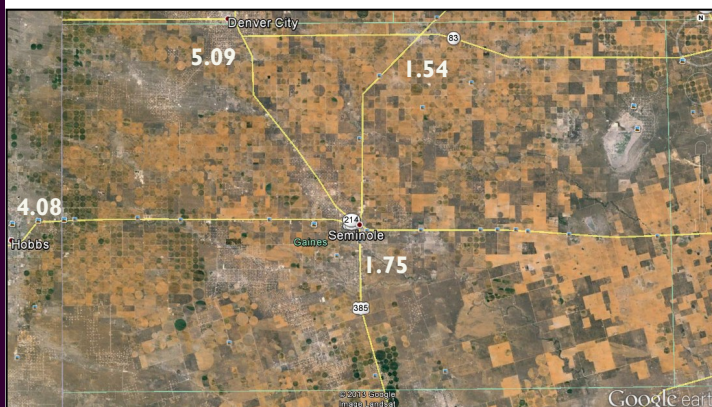


# Gaines County IPM Newsletter

Volume VI, No. 7

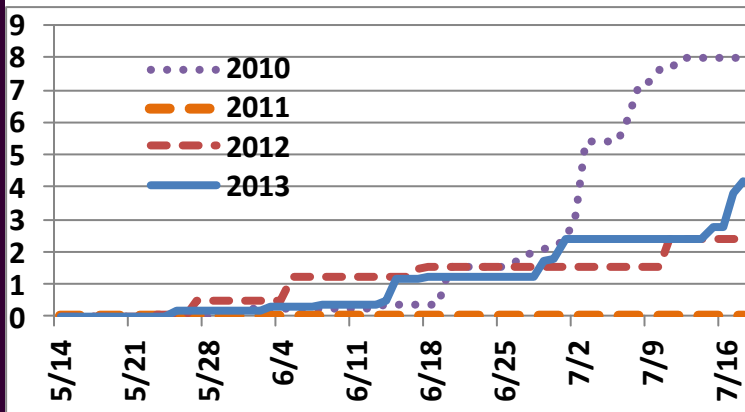
## General Situation

Gaines County has been blessed this week! The slow soaking rainfall has been a big step forward in replenishing our depleted soil moisture. Rainfall totals range from 1.5 to 5.0 inches over the last four days. Below are the rainfall totals from the [West Texas Mesonet](#).



Over the last couple of months, the rainfall periods have fallen between dry dusty periods. For example, this past Sunday's (July 14) wind storm caused more wind and blowing sand damage in some fields. Hopefully this week's rainfall will break our drought and we will receive more rainfall in the coming weeks.

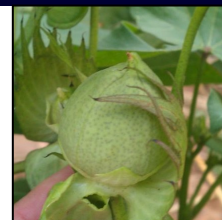
**Table 1. Inches of Accumulated Rainfall in Seminole, TX from May 14 - July 18, 2010, 2011, 2012, & 2013 .**



This graph only represents the amount of rainfall Seminole received. Rain showers have been very spotty, therefore areas of the county may have received more or less rainfall over the last four years.

## Cotton

Cotton stages currently range from match head size squares to the third week of bloom, with most fields reaching first bloom during the next week or two. Most of the fields will benefit from the recent rainfall. However, the rainfall may have come a little to late for some of cotton fields in the extreme maturity stages. The young cotton fields that are at match head square and have been struggle all season long, may not have enough time to produce a mature crop. On the other extreme we have some fields that are at 4-5 Nodes Above White Flower (NAWF), and we are hoping this rainfall will help these fields to float at or above 5 NAWF. The cotton fields in the middle ground will likely benefit the most.



Cotton plants may shed a few small squares due to the prolonged cloudy conditions. Scouting your fields on a regular basis will enable you to determine if a low square set is caused by insects or weather related factors. Please see the [July 4, 2013 edition of the Gaines County IPM Newsletter](#) for things to consider if you are debating on applying plant growth regulators. Nitrogen should be out at this point or within the next couple of weeks. If you decide to sidedress nitrogen be careful not to prune roots because the wound on the roots makes it easier for diseases, such as Verticillium wilt, to penetrate the roots.

## Peanut

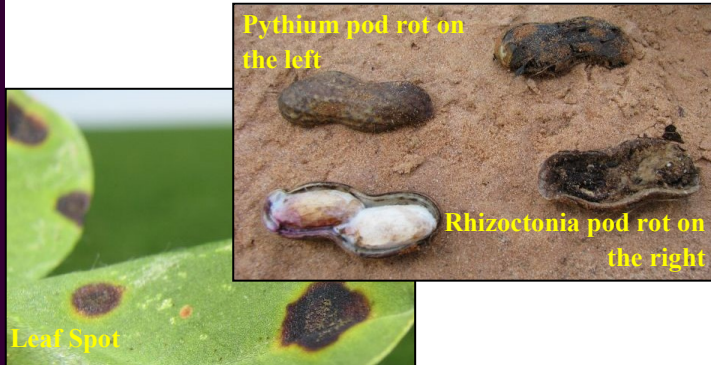
Peanuts have the most to gain from the recent cool humid rainy conditions. Peanut flowers



in response to elevated humidity and pod set is enhanced by elevated humidity and moist surface soils. Consequently, yield is positively affected by an extended period of high humidity during the critical 45 to 90 days after emergence. The peanut plant can initiate a large flush of flowers when favorable environmental conditions are present.

### Peanut & Cotton Diseases

We are very thankful for the rainfall, but it has opened the door for disease development. We did not find any diseases in our scouting program fields this week, however, I would highly recommend growers scout their peanut fields for pod rot and leaf spot.



We have already started picking up Verticillium wilt in some cotton fields. There is no miracle product to spray on cotton fields for the management of Verticillium wilt. However, producers can note which fields have Verticillium wilt, so that they can choose a variety that is tolerant to Verticillium wilt in 2014. Dr. Jason Woodward, Texas A&M AgriLife Extension Plant Pathologist, covered Verticillium wilt in the [July 19, 2013 edition of FOCUS on South Plains](#)

[Agriculture](#). He also include several good pictures of Verticillium wilt in the article.

### Insects and Weeds

Insect pressure remains light. We are picking up light populations of bollworms in non-Bt cotton and peanuts.

Weeds continue to be our main concern and we are already seeing new flushes of weeds. Right now is the best time to apply herbicides, because the recent rainfall washed the dust off the weeds and we still have higher than normal humidity. Therefore, herbicide applications likely will be more effective. But don't wait to long, the weeds are growing fast and we are forecasted to have warmer & lower humidity days next week. Producers also need to be thinking about layby herbicide applications for weed control.



#### Special Thanks to the 2013 Gaines County TPMA Scouting Program Sponsors

##### Platinum

- Carter & Co. Irrigation, Inc.
- Oasis Gin, Inc.
- TriCounty Producers Coop

##### Gold

- Nolen Ag Services, Inc.

##### Silver

- Ag AERO
- BASF Corporation
- Doyle Fincher Farms
- Golden Peanut Company
- Sanders, Inc.

##### Bronze

- Ag Texas Farm Credit Services
- Anderson Welding, Pump & Machine Service, Inc.
- Baucum Insurance Agency
- Birdsong Peanuts
- Cheuvront Farms
- Commercial State Bank
- Five Points Gin, Inc.
- Keith & Carol Addison
- Lynn & Leca Addison
- Pioneer Gin, Inc.
- South Plains Implement, Ltd.
- Ten Hi Gin, Inc.
- Valley Irrigation & Pump Service, Inc.
- West Gaines Seed, Inc.
- West Texas National Bank

##### Sponsors

- L.D. Cope Farms
- McKinzie Insurance Agency

TEXAS A&M  
**AGRILIFE**  
 EXTENSION

Manda Anderson  
 101 S. Main Rm 111  
 Seminole, TX 79360  
 Phone: 432-788-0800  
[mmanderson@ag.tamu.edu](mailto:mmanderson@ag.tamu.edu)

Gaines County IPM Blog  
<http://agrilife.org/gainesipm/>

Gaines County Website  
<http://gaines.agrilife.org/>

Educational programs conducted by Texas A&M AgriLife Extension serve people of all ages regardless of socioeconomic level, race, color, sex, religion, handicap or national origin. The information given herein is for educational purposes only. References to commercial products or trade names is made with the understanding that no discrimination is intended and no endorsement by Texas A&M AgriLife Extension is implied.