

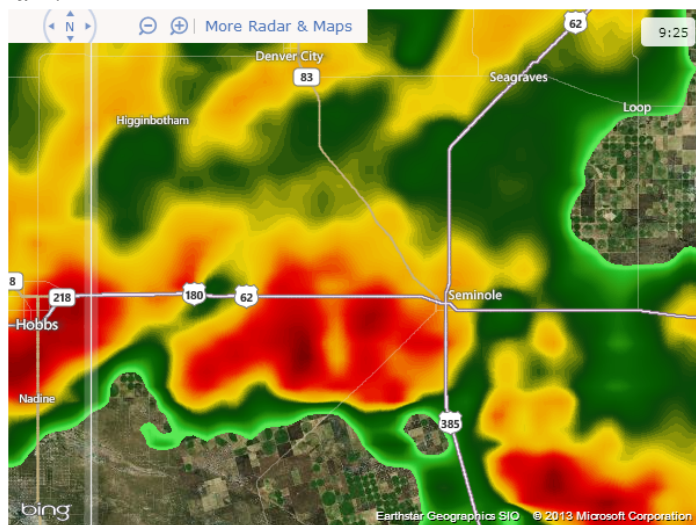


# Gaines County IPM Newsletter

Volume VI, No. 10

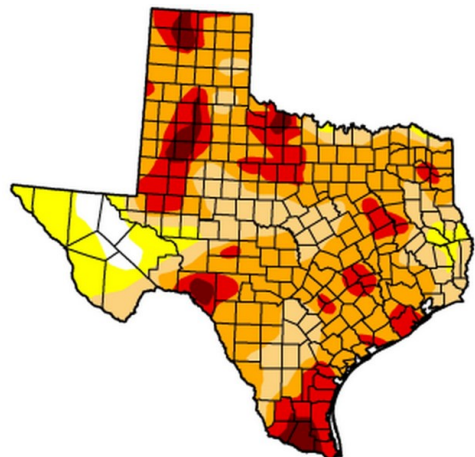
## General Situation

We have been blessed with some more rainfall! Below is the radar image from the morning of August 14, 2013. I have received reports of 0.2 to 0.5 inches of rain.



The recent rainfall events have helped to replenish the depleted soil conditions. However, we are still considered to be in a severe drought condition, with the eastern portion of Gaines County still in an extreme drought.

Below is the **August 13, 2013** Drought monitor provided by the [National Drought Mitigation Center](#).

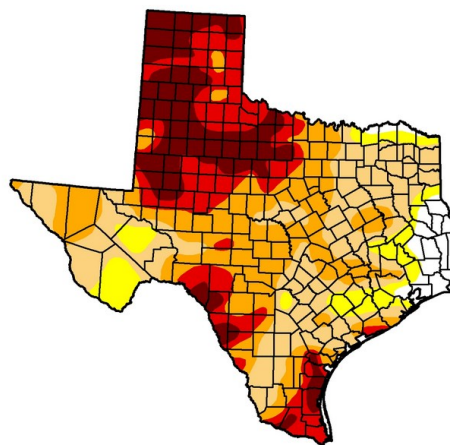


**Intensity:**

- D0 Abnormally Dry
- D1 Drought - Moderate
- D2 Drought - Severe
- D3 Drought - Extreme
- D4 Drought - Exceptional

The recent rainfalls have put us in a better situation than we were 2 months ago.

Below is the **June 4, 2013** Drought monitor provided by the [National Drought Mitigation Center](#).



The early season harsh conditions coupled with an ongoing drought resulted in several acres of failed irrigated and dryland cotton in Gaines County. Below is the latest Farm Service Agency (FSA) Gaines County crop acreage report. Gaines County had a total of 308,041 planted acres of dryland and irrigated cotton. Total Peanut Acres is 26,035.

Crop	Total Acres	Failed Acres
Irrigated Cotton	175,663	41,170
Dryland Cotton	132,378	116,256
Valencia Peanuts	2,522	0
Virginia Peanuts	13,164	0
Spanish Peanuts	7,972	0
Runner Peanuts	2,377	0
Irrigated Sorghum	15,649	125
Dryland Sorghum	4,094	0
Irrigated Wheat	35,430	5,638
Sunflowers	501	0
Watermelon	649	0
Sesame	202	0

Farm Service Agency (FSA) Gaines County crop acreage report continued...

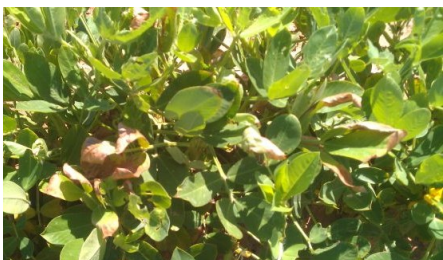
Crop	Total Acres	Failed Acres
Corn Silage	1032	0
Corn	460	0
Guar	308	0
Pecans	1186	0
Alfalfa	60	0

### Crop Stages & Pest Situation

Cotton ranges from 2 to 7 Nodes Above White Flower (NAWF). Some of later planted fields, that were further delayed due to the harsh early-season conditions, saw their first blooms this week. Depending on fall conditions these fields may or may not be able to make a harvestable crop.

Peanut blooming has slowed, but we are still seeing a large number of developing pegs and pods. The peanut crop as a whole looks very nice. We are still picking up low levels of pod rot.

A few peanut fields are starting to show signs of salinity damage. It was about this same time last year that we started picking up salinity damage in peanuts. Please see the [August 14, 2012 Gaines County IPM Newsletter](#) which includes an in depth discussion on salinity. Below is a picture of a peanut plant that is showing signs of salinity damage. The salts accumulate at the edge of the leaf, causing the leaf edges to become necrotic and die.



Over the past week we have picked up very light populations of stinkbugs & lygus in cotton. Also, our bollworm populations seem to be decreasing in non-Bt cotton and peanut. Overall, I would say that insect pressure is very light. Weeds continue to be our major concern.

### Cotton Cutout & Heat Unit Accumulation

Cotton is considered cutout when it reaches 5 Nodes Above Whiteflower (NAWF). To determine NAWF, simply find the uppermost 1<sup>st</sup> position white flower and count the number of nodes above it.

Bolls are safe from caterpillar feeding damage at 350 heat units (H.U.) accumulated past cutout. Bolls are safe from Lygus and stink bug feeding damage at 450 H.U. accumulated past cutout.

As we head into the end of the season I will be including our daily H.U. accumulation in my newsletters. Growers can use the H.U. accumulation table to determine how many H.U. their fields have accumulated since cutout and to determine if they are safe from bollworms, lygus, and stinkbugs.

Date	Daily High	Daily Low	Daily Heat Units (H.U.) Acc.	H.U. Acc. Since Aug. 1	H.U. Acc. Since Aug. 8
August 1	98	70	24.0	24.0	
August 2	100	68	24.0	48.0	
August 3	102	75	28.5	76.5	
August 4	97	67	22.0	98.5	
August 5	99	67	23.0	121.5	
August 6	103	72	27.5	149.0	
August 7	98	68	23.0	172.0	
August 8	95	68	21.5	193.5	21.5
August 9	92	65	18.5	212.0	40.0
August 10	89	68	18.5	230.5	58.5
August 11	90	69	19.5	250.0	78.0
August 12	95	67	21.0	271.0	99.0
August 13	95	70	22.5	293.5	121.5
August 14	84	66	15.0	308.5	136.5
August 15	91	63	17.0	325.5	153.5

### Upcoming Meetings:

#### Sunflower Turn-Row Meeting—Gaines/ Terry County

Thursday, August 22, 2013

10:30AM-1:00PM Lunch Provided

1.5 CEUs available

At the Brent Hendon Farm in Northeast Gaines County On Gaines County Road 149 0.75 miles south of TX 83.

**Further information:** Dr. Calvin Trostle, Texas A&M AgriLife, Lubbock, 806-746-6101, [ctrostle@ag.tamu.edu](mailto:ctrostle@ag.tamu.edu), or Terry County Extension office, 806-637-4060.

**Gaines County Ag Tour****Thursday, August 29, 2013****8:00AM-1:00PM Lunch Provided****3 CEUs available**

8:00 Registration at the

Gaines County Civic Building, 402 N.W. 5th Street

8:30 Depart for Area Peanut and Cotton Fields.

**Further information:** Gaines County Extension office,  
432-758-4006.**Monsanto/Deltapine Showcase Event****Tuesday, September 17, 2013****10:00AM-2:00PM Lunch Catered by Dickey's**

At the Nichols Farm

Located 6 miles SW of Seminole on

FM 181 (Frankel City Highway)

**Further information:** Doug Stutler at 806-778-4102

**Please let me know if there are any other  
producer field days coming up so that I  
can include it in my future newsletters.**

**61st Annual Meeting of the West Texas  
Agricultural Chemicals Institute****Tuesday, Sept. 10, 2013****Scottish Rite Temple - Learning Center, located at  
1101 70th Street in Lubbock, (South Loop 289 and  
Interstate 27).**

This year represents the 61st meeting of WTACI, an unincorporated organization of dealers, industry representatives, agricultural producers, scientists, educators, and agribusiness members who support education and research programs promoting safe and effective use of agricultural chemicals and protection and preservation of the area's natural resources.

Topics to be discussed at the conference include various aspects of pest identification and management, pesticide laws and regs, research efforts on row crops in the High Plains, and much more. The Texas Department of Agriculture (TDA) has approved a total of 6 continuing education units (CEU's pending). Pre-registration currently is available online at <http://wtaci.tamu.edu>. Registration forms have been mailed. On-line registration fees are \$75 for conference attendees and must be completed or postmarked by August 31. On-site registration will begin at 7:00 am the day of the conference and will cost \$95 for attendees. Lunch will be provided as part of the registration fee.

**Special Thanks to the 2013 Gaines County TPMA Scouting Program Sponsors****Platinum**

Carter &amp; Co. Irrigation, Inc. Oasis Gin, Inc.

TriCounty Producers Coop

**Gold**

Nolen Ag Services, Inc.

**Silver**

Ag AERO BASF Corporation

Doyle Fincher Farms Golden Peanut Company

Sanders, Inc.

**Bronze**

Ag Texas Farm Credit Services Anderson Welding, Pump &amp; Machine Service, Inc.

Baucum Insurance Agency Birdsong Peanuts

Cheuvront Farms Commercial State Bank

Five Points Gin, Inc. Keith &amp; Carol Addison

Lynn &amp; Leca Addison Pioneer Gin, Inc.

South Plains Implement, Ltd. Ten Hi Gin, Inc.

Valley Irrigation &amp; Pump Service, Inc. West Gaines Seed, Inc.

West Texas National Bank

**Sponsors**

L.D. Cope Farms McKinzie Insurance Agency

**TEXAS A&M  
AGRILIFE  
EXTENSION**

**Manda Anderson  
101 S. Main Rm 111  
Seminole, TX 79360**

**Phone: 432-788-0800  
mganderson@ag.tamu.edu**

**Gaines County IPM Blog  
<http://agrilife.org/gainesipm/>**

**Gaines County Website  
<http://gaines.agrilife.org/>**

Educational programs conducted by Texas A&M AgriLife Extension serve people of all ages regardless of socioeconomic level, race, color, sex, religion, handicap or national origin. The information given herein is for educational purposes only. References to commercial products or trade names is made with the understanding that no discrimination is intended and no endorsement by Texas A&M AgriLife Extension is implied.